

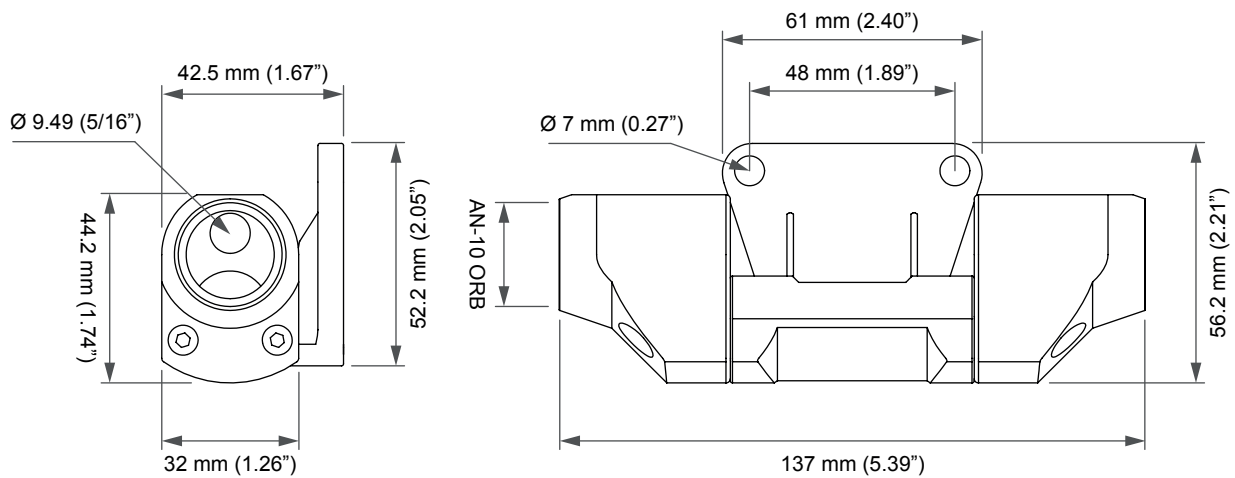
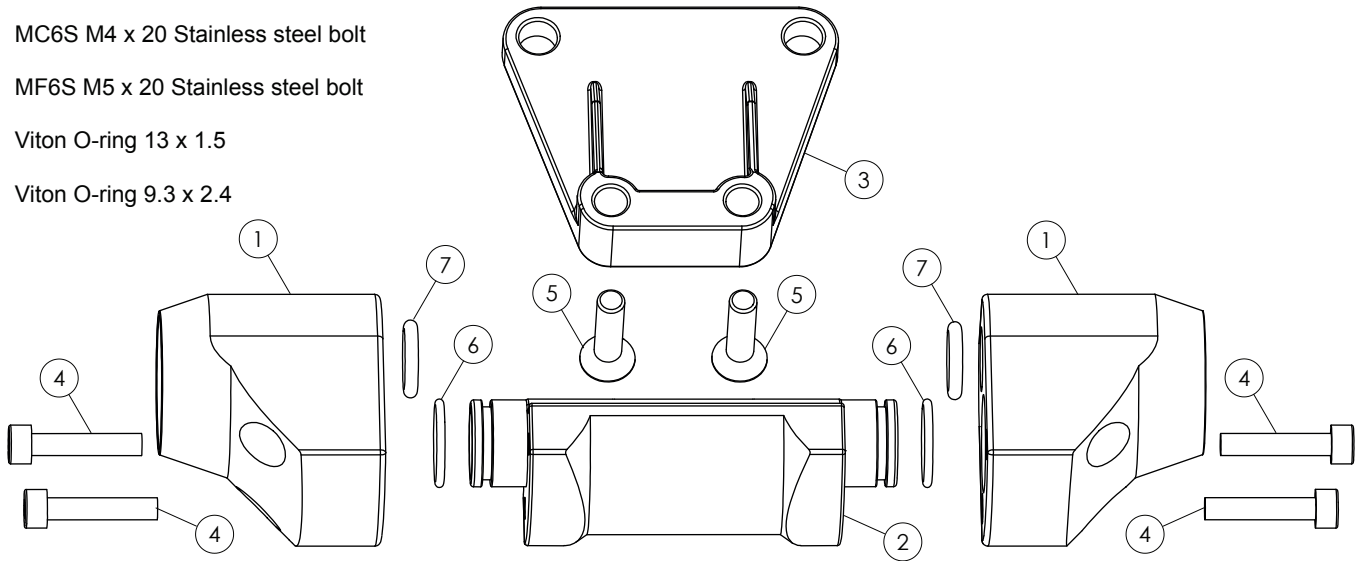
Full Flow Flex Fuel Sensor Adapter

Part #: 310-03-201

Assembly Instructions | © Nuke Performance AB 2022

For more information visit : www.nukeperformance.com

- 1 Aluminum end cap with AN-10 ORB thread
- 2 Bypass aluminum sleeve
- 3 Mounting bracket, used for 13577429
- 4 MC6S M4 x 20 Stainless steel bolt
- 5 MF6S M5 x 20 Stainless steel bolt
- 6 Viton O-ring 13 x 1.5
- 7 Viton O-ring 9.3 x 2.4



Nuke Performance full flow flex fuel sensor adapter specifications

For more information about specifications, visit our product page on our website.

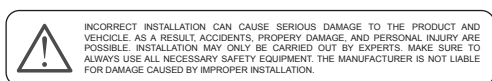
Nuke Performance : www.nukeperformance.com



Fits sensors	SE1003, 13577379 13577429, 13577394*	Height **	44.2mm (1.74") / 56.2mm (2.21")
Inlet thread	AN-10 ORB (no fittings included)	Width	137mm (5.39")
Outlet thread	AN-10 ORB (no fittings included)	Depth **	32mm (1.26") / 42.5mm (1.67")
Bypass design	YES, total internals exceeds AN-10 fuel line	Bracket CC	48mm (1.89")
Fuel compatibility	Gasoline, Petrol, Methnaol, Ethanol	Sensor SAE connection	SAE 9.49 (5/16")
Integrated bracket	YES, removable when not needed	Sensor max width	95mm (3.75")

* Needs to be modified, cut length of SAE pipe to 95mm (3.75"), cut equal length on each side of sensor

** First measurement is without the included bracket, second measurement is with the included bracket



Information:

Design combined with top quality performance.
For more information about the products and retailers visit
www.nukeperformance.com

nuke
PERFORMANCE